



FACT SHEET

SUSTAINABLE FOREST MANAGEMENT



©YKAN

Yayasan Konservasi Alam Nusantara (YKAN), recognizes that the world we depend on depends on us. Therefore, we encourage development that are aligned with nature conservation. YKAN Terrestrial Program supports efforts to sustainably manage natural resources, increasing carbon-friendly and biodiversity-friendly commitments and practices, through multilateral collaborations, including local community initiatives, to achieve green development goals and improve community well-being.

Why Kalimantan?

Rich in biodiversity and high endemism

- **#3rd** largest island in the world
- **6%** of global biodiversity
- **20 million hectares** of natural forest
- **2.7 million hectares** of essential ecosystems were identified in East Kalimantan for endangered wildlife and essential ecosystem conservation.



Kalimantan's forests play an important role in climate change mitigation and adaptation efforts

Kalimantan holds the potential to contribute up to **40%** of the total target for greenhouse gas emission reduction in Indonesia, of which **30%** of it can be achieved through the natural climate solutions.

Over 50% of the forest lands in Kalimantan are designated for productive purposes. Ensuring sustainable forest management for production is crucial for long-term prosperity. This goal can be attained by conserving biodiversity as a livelihood source and safeguarding the Earth's climate system through effective mitigation within the land and forestry sectors.

40%

$\pm 44.tCO_2-e$

YKAN has conducted considerable research to optimize reduced impact logging, such as the Reduced Impact Logging for Climate Change Mitigation or RIL-C. This approach potentially lowers carbon emissions from timber harvesting to 40% or approximately $44.tCO_2-e$.



Challenges

Inefficient conventional logging methods.

Monitoring and enforcement of sustainable logging still needs improvement.

The slim profit margin for production forest concession license holders.

Limited availability of best practices and compelling business cases for the RIL-C approach accessible to logging operatives.

Opportunities

The utilization of innovative tools and technologies, such as modified excavators and LiDAR, in RIL-C implementation, could offer persuasive business cases and enhance ecological sustainability.

Facilitating the refinement of policy and financial instruments that strengthen the uptake of sustainable forest management among holders of Forestry Concession Business Licenses (PBPH) for selective logging in natural forests.

Aiding business owners in developing sustainable non-timber commodities through adoption of the multibusiness forestry policy.

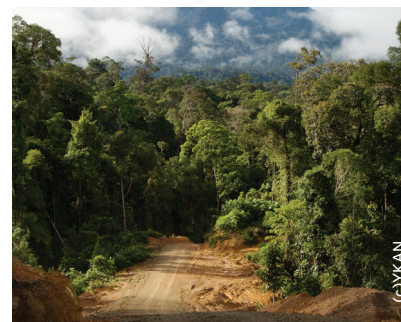
Catalyze financial facilities for entrepreneurs to access essential tools, technology, and expertise required for fostering a sustainable natural production forest industry.

Intervention

Reduce carbon emissions through RIL-C implementation and monitoring



Improve forest economic value through a multibusiness forestry



Protection of High Conservation Value areas within PBPH



Our Strategy



Capacity building for PBPH to achieve or maintain Sustainable Production Forest Management (PHPL) operations and certification through RIL-C training and coaching.



Collaborating with and providing mentorship for Forest Management Units (KPH) on effective RIL-C monitoring.



Promote the integration of RIL-C into forestry/PHPL regulations.



Encourage the utilization of renewable tools and technology in RIL-C implementation through sustainable financial mechanisms.



Identify multibusiness potential in PBPH concession areas, such as Non-Timber Forest Products (HHNK), ecotourism, carbon, and other environmental services.



Formulate strategy and business model for the multibusiness scheme implementation in PBPH areas.



Collaboration with *adat* (tribes) and local communities in the multibusiness forestry scheme.



Explore partnerships with impact investors to expand the multibusiness forestry scheme.



Conduct spatial analysis to map forest areas with high conservation value within Industrial Plantation Forest (HTI) and Natural Forest (HA) areas of the PBPH.



Establish a partnership with the Forestry and HTI Agency to develop a natural forest conservation strategy within the timber plantation landscape.



Develop a prototype natural forest concession to implement sustainable forest management through Reduced Impact Logging-Carbon (RIL-C) and a multi-business scheme.

Achievements

20 Forest Concession Right (HPH) holders earned "good" PHPL status in 2022, translating to a coverage area of ~1.6 million hectares.

11 HPH holders earned or maintained their international Forest Stewardship Council (FSC) certification in 2022, translating to a coverage area of 900,000 hectares.

9 HHNK products with the potential for further expansion under the multibusiness scheme within PBPH concession areas in Berau, East Kalimantan, were identified.

Approval from impacted communities regarding the plan to implement a multibusiness scheme in the PBPH concession area in Berau has been obtained through the PADIATAPA process (Free, Prior, and Informed Consent).

Testing **~44,000** hectares of the PBPH concession area as a RIL-C and multibusiness implementation model in collaboration with adat communities.

~1,100,000 hectares of the remaining natural forest were identified within the HTI of the PBPH in Kalimantan.

Most critical ecosystems, including habitats of endangered species and areas with high carbon values, exist beyond protected areas. It is imperative that PBPH managers engage in collaborative and sustainable practices to effectively steward natural resources. This approach should consider the compelling business rationale for RIL-C, while also prioritizing ecosystem conservation and habitat preservation for the well-being of humanity both today and tomorrow.



RIL-C practices in PBPH under KPH work areas is a decisive action in the forestry sector to reduce greenhouse gas emissions in East Kalimantan.

Nanang Hayani

East Kalimantan Forestry Agency

Support us

Sustainable forest management must be carried out collectively to protect nature and preserve lives. We can achieve wide-ranging benefits through an integrated effort for collaborative management by multiple parties, including ecosystem conservation, biodiversity protection, and ensuring the local communities welfare.

Scan for more info



Forest Preservation
Citizen-Based Initiative

Contact:

Delon Marthinus

delon.marthinus@ykan.or.id

About YKAN

Yayasan Konservasi Alam Nusantara (YKAN) is a non-profit organization which was established in Indonesia in 2014. With the mission to protect lands and waters on which all life depends, YKAN provides innovative solutions for realizing harmony between nature and people, through effective management, non-confrontational approaches, and building collaborative partnerships with all stakeholders for a sustainable Indonesia.

**Konservasi
Alam Nusantara**

Untuk Indonesia Lestari



Office address: Graha Iskandarsyah 3rd fl. Jalan Iskandarsyah Raya No. 66C, South Jakarta, 12160, Indonesia



@ykan_id



Yayasan Konservasi Alam Nusantara



indonesia@ykan.or.id



ykan.or.id